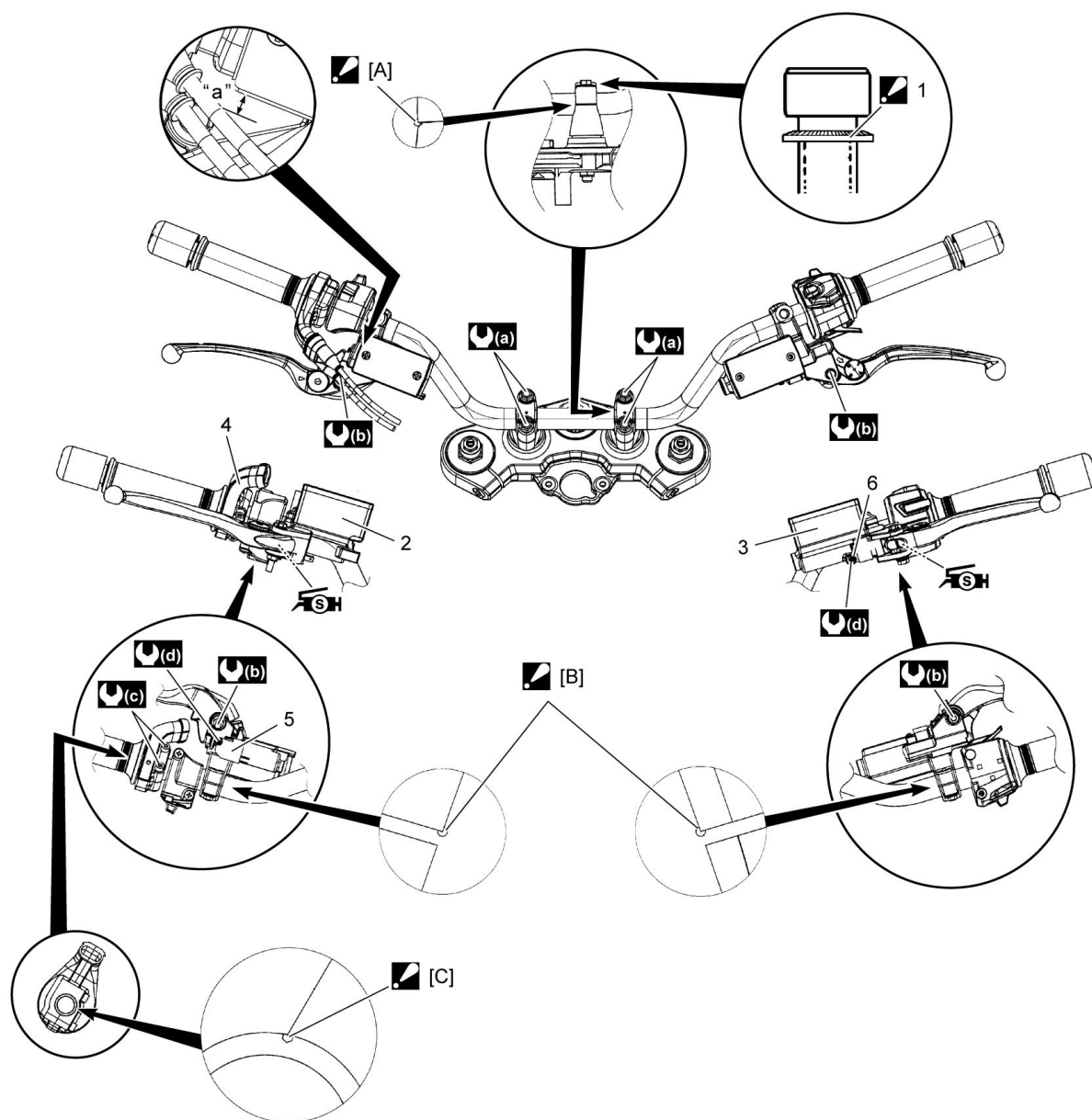


6B



Handlebar Construction



[A]:	Align the matching surface of handlebar holder with punch mark of handlebars.	2. Front brake master cylinder	6. Clutch lever position switch	(c):	3 N·m (0.3 kgf-m, 2.5 lbf-ft)
[B]:	Align the punch mark of handlebars with the edge of master cylinder.	3. Clutch master cylinder	"a": 3 – 5 mm (0.1 – 0.2 in)	(d):	1.2 N·m (0.12 kgf-m, 1.0 lbf-ft)
[C]:	Align the matching surface of throttle case with punch mark of handlebars.	4. Throttle case	(a):	H:	23 N·m (2.3 kgf-m, 17.0 lbf-ft) Apply silicone grease.
1.	Washer : The conical side of washer faces outside.	5. Brake light switch	(b):		6 N·m (0.6 kgf-m, 4.5 lbf-ft)